

# SPEC SHEET + MEASUREMENTS



## OGIO® Envision Polo. OG154

### Product photo



OGIO envisioned this high-performance polo to set a new standard in corporate style. Designed with stretch, moisture wicking and inherent UV ray resistance, this elevated polo is exceptional for work or play.

- 4.9-ounce, 88/12 nylon/spandex micropique with stay-cool wicking technology
- UPF rating of 30
- OGIO heat transfer label for tag-free comfort
- Self-fabric collar
- OGIO neck tape
- 3-snap placket
- Dyed-to-match O OGIO icon snaps (White has black snaps)
- Modified raglan sleeves
- Tonal raised O OGIO icon heat transfer on left sleeve (White has black logo)

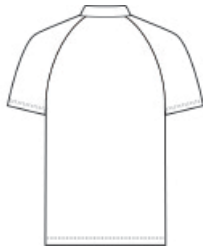
### CARE INSTRUCTIONS

Machine Wash Cold With Like Colors. Do Not Use Fabric Softener. Do Not Bleach. Tumble Dry Low. Remove Promptly. Cool Iron If Necessary.

### Sketches



front



back

# SPEC SHEET + MEASUREMENTS



OGIO® Envision Polo. OG154

## PRODUCT MEASUREMENTS

	XS	S	M	L	XL	2XL	3XL	4XL
Body Length at Back	27	28	29	30	31	32	32 1/2	33
Chest	18	19 1/2	21	22 1/2	24	25 1/2	27 1/2	29 1/2
Sleeve Length from Center Back	17 7/8	18 3/8	18 3/4	19 1/4	19 5/8	20 1/8	20 5/8	21 1/4

**Body Length at Back:** Measured from high point shoulder to finished hem at back.

**Chest:** Measured across the chest one inch below armhole when laid flat.

**Sleeve Length from Center Back:** Measure from Center Back neck to shoulder point to sleeve hem.

## SIZE CHARTS

	XS	S	M	L	XL	2XL	3XL	4XL
Chest	32-34	35-37	38-40	41-43	44-46	47-49	50-53	54-57

# SPEC SHEET + MEASUREMENTS



OGIO® Envision Polo. OG154

## HOW TO MEASURE

---



### CHEST

Measure under the arm and around the fullest part of the chest with arms down, keeping tape horizontal.

## COLORS

---

Please note: PMS code information is shown only when an exact match is available.



Blacktop  
PMS BLACK  
C



Deep Rose  
PMS 7639C



Force Blue  
PMS 4153C



River Blue  
Navy  
PMS 533C



Rogue Grey  
PMS 4195C



White